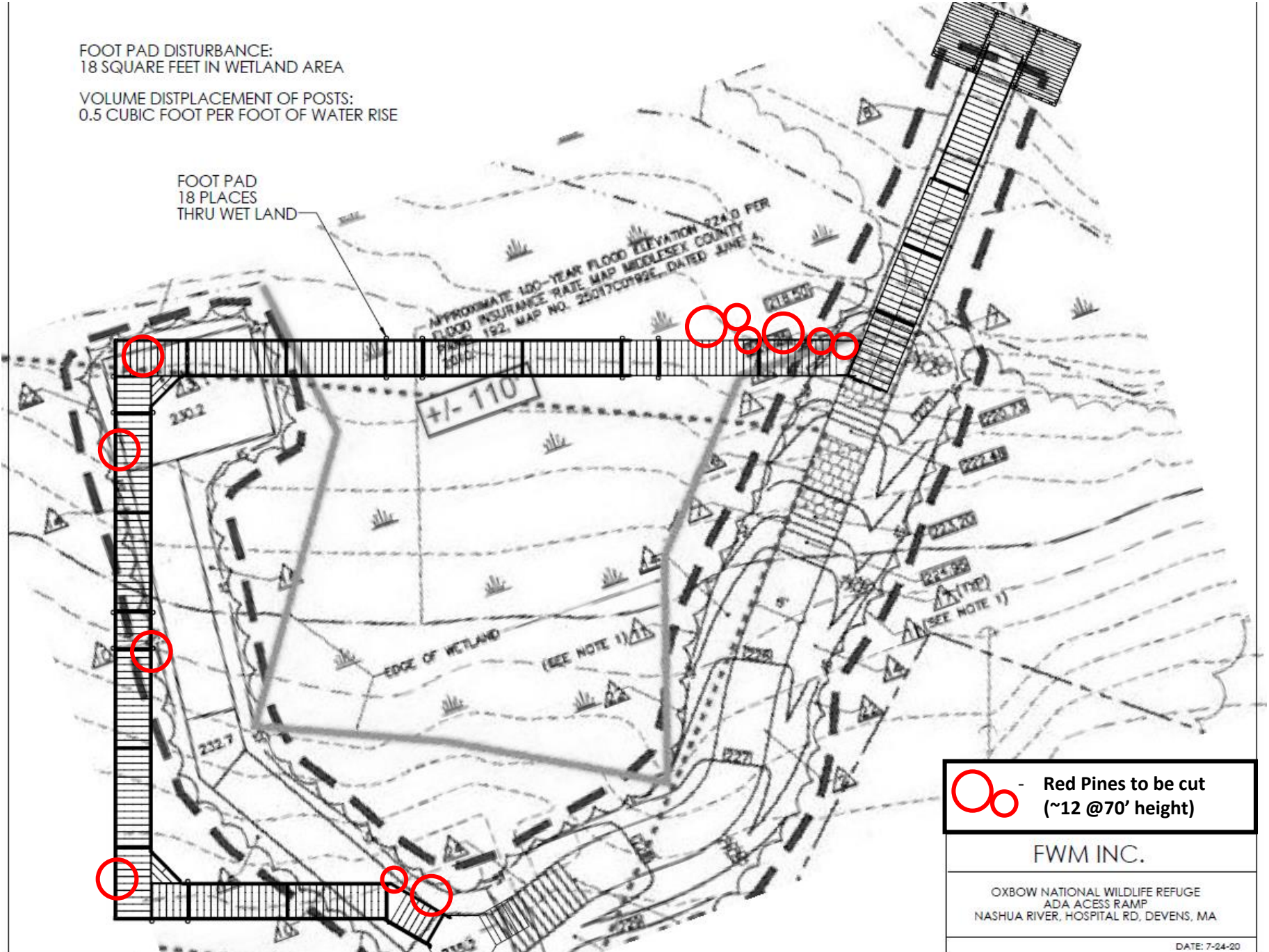


FOOT PAD DISTURBANCE:  
18 SQUARE FEET IN WETLAND AREA

VOLUME DISPLACEMENT OF POSTS:  
0.5 CUBIC FOOT PER FOOT OF WATER RISE

FOOT PAD  
18 PLACES  
THRU WET LAND



 - Red Pines to be cut  
(~12 @70' height)

FWM INC.

OXBOW NATIONAL WILDLIFE REFUGE  
ADA ACCESS RAMP  
NASHUA RIVER, HOSPITAL RD, DEVENS, MA