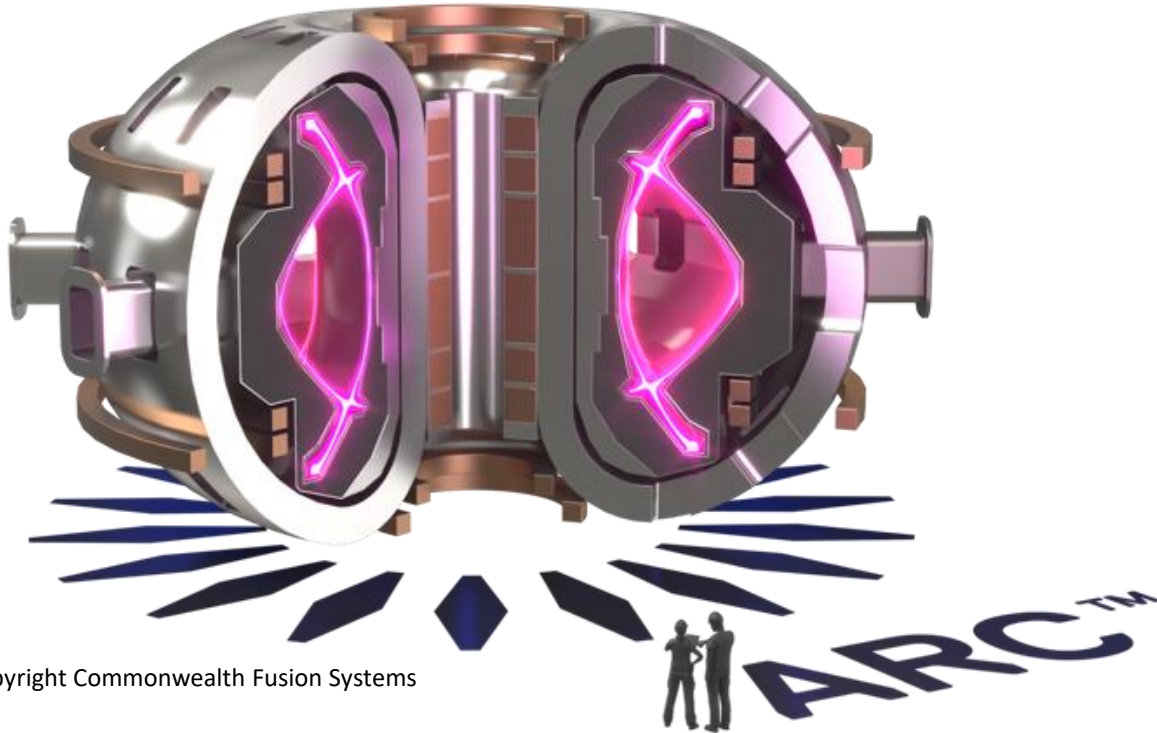
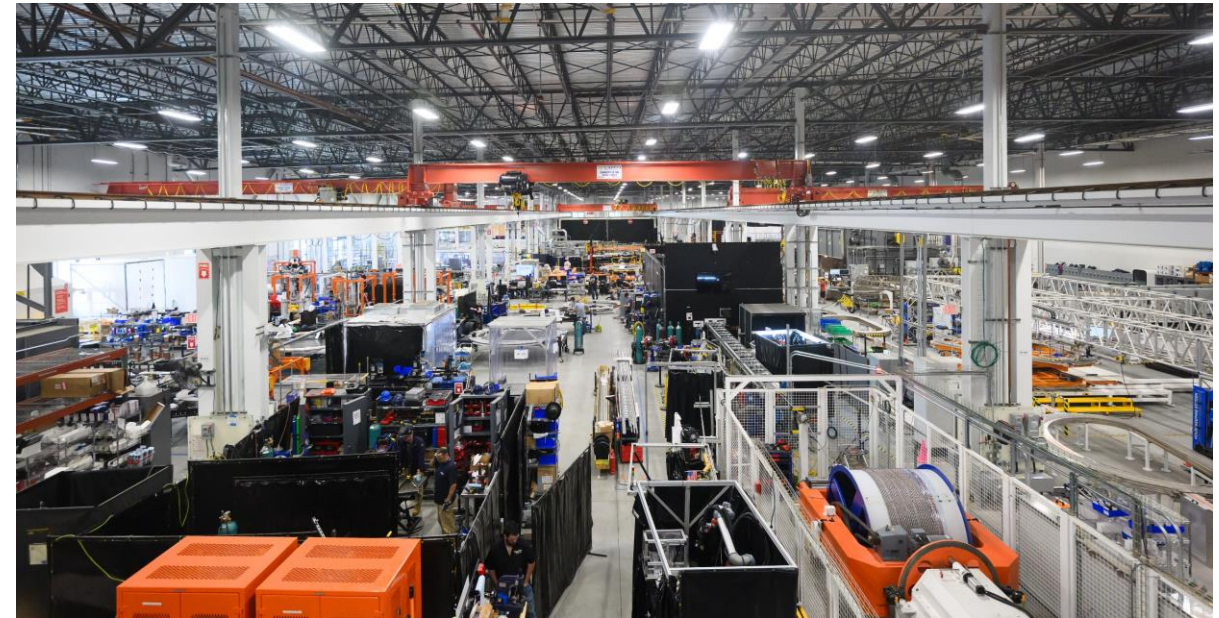


## Commonwealth Fusion Systems – Building 3



Copyright Commonwealth Fusion Systems

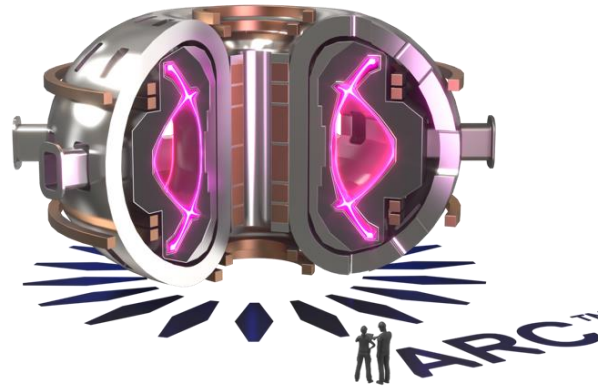


Copyright Commonwealth Fusion Systems

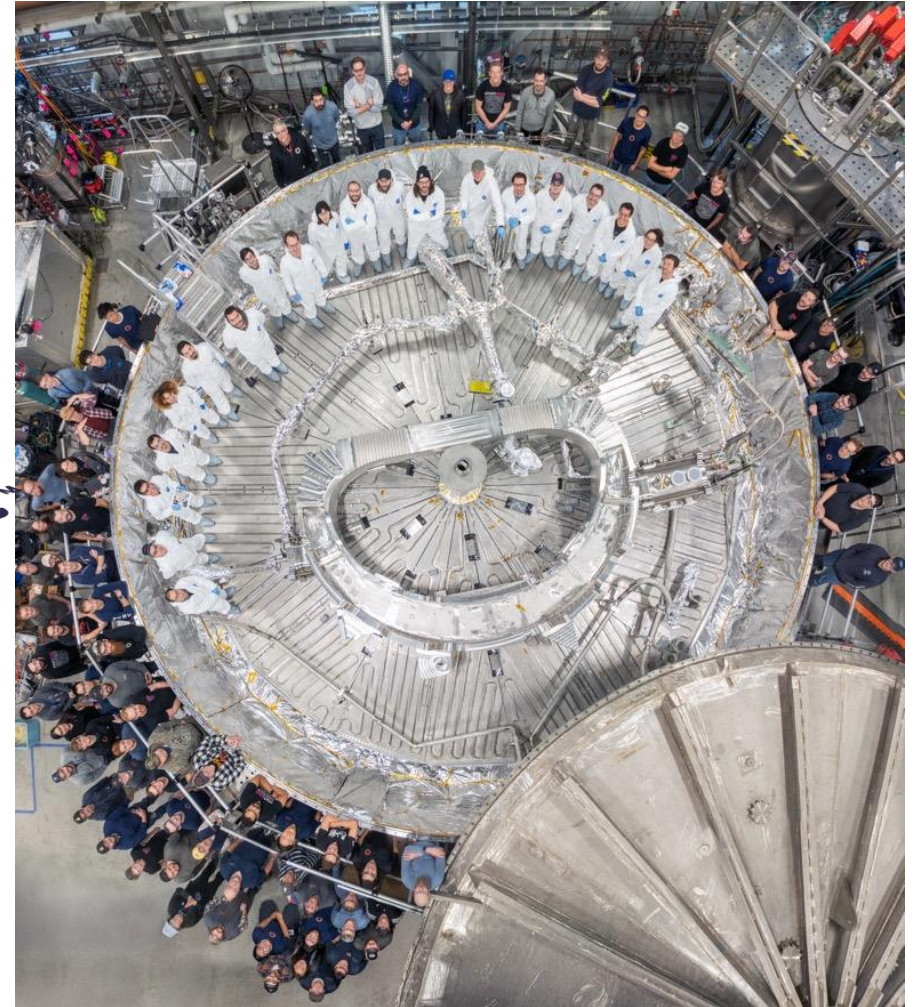




Copyright Commonwealth Fusion Systems



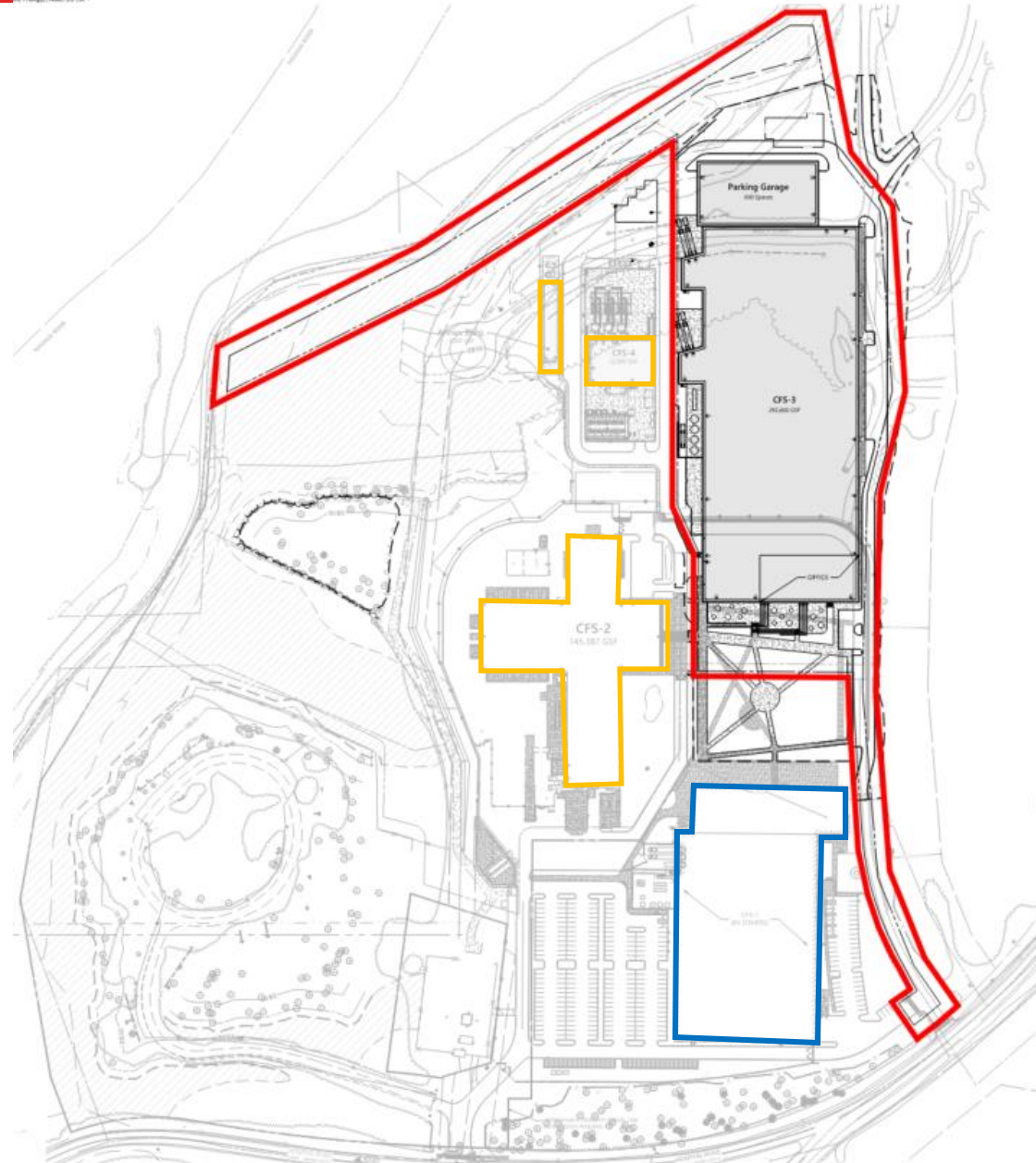
Copyright Commonwealth Fusion Systems



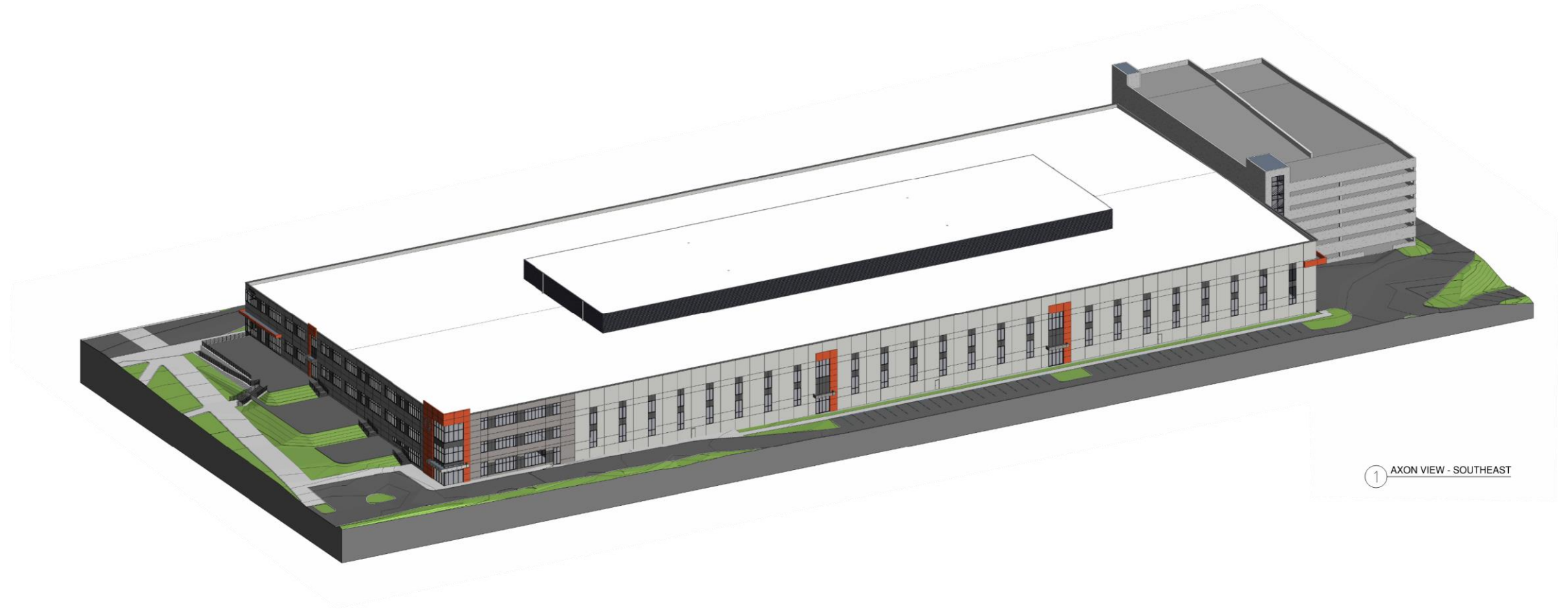
Copyright Commonwealth Fusion Systems



## Campus Overview



## Building Overview



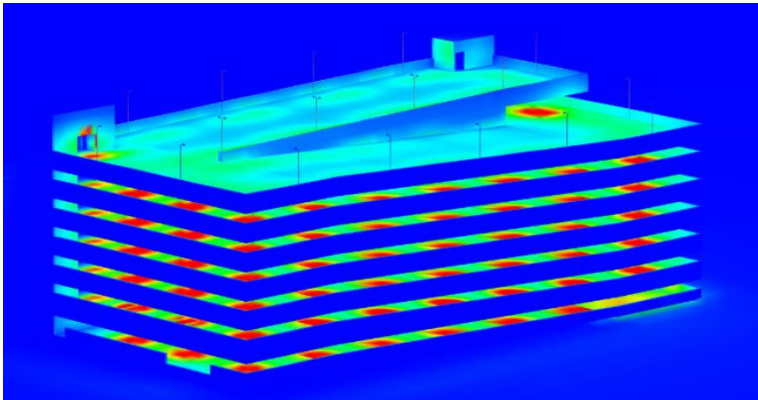
1 AXON VIEW - SOUTHEAST

## Garage Lighting, Design and Operations

- Minimize garage “openness”
- Raise spandrel and parapet walls
- Select exterior building materials
- Specify light fixtures that reduce glare and light spillage “shielding”
- Decrease fixture brightness and evenly distribute to reduce “hot spots”
- Increase vegetative screening
- Utilize occupancy sensors of lighting
- Lower utilization at night and weekends
- Shift Changes

## Garage Lighting & Design

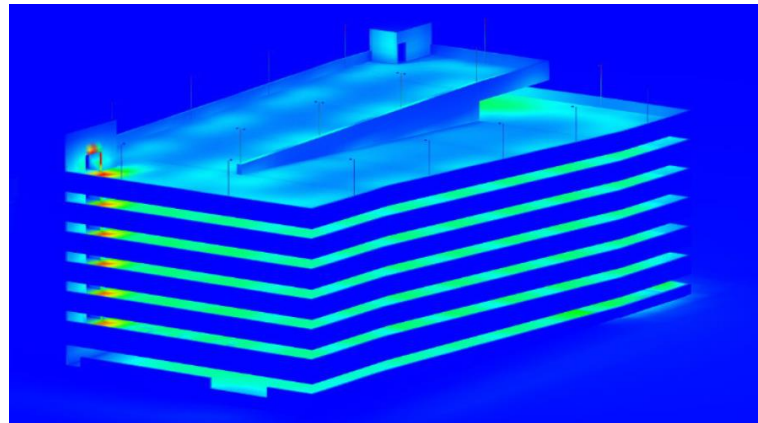
### Typical Lighting Design



#### Calculation Summary for a Typical Tier

Average Levels = 5.78 Fc  
Average Maximum = 17.43 Fc  
Average Minimum = 1.98 Fc  
Average Min/Max = 10.14 Fc

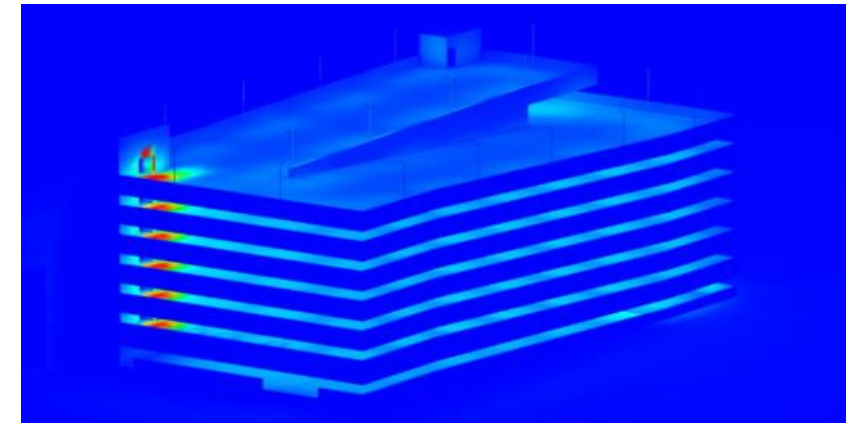
### 12/16 Lighting Approach



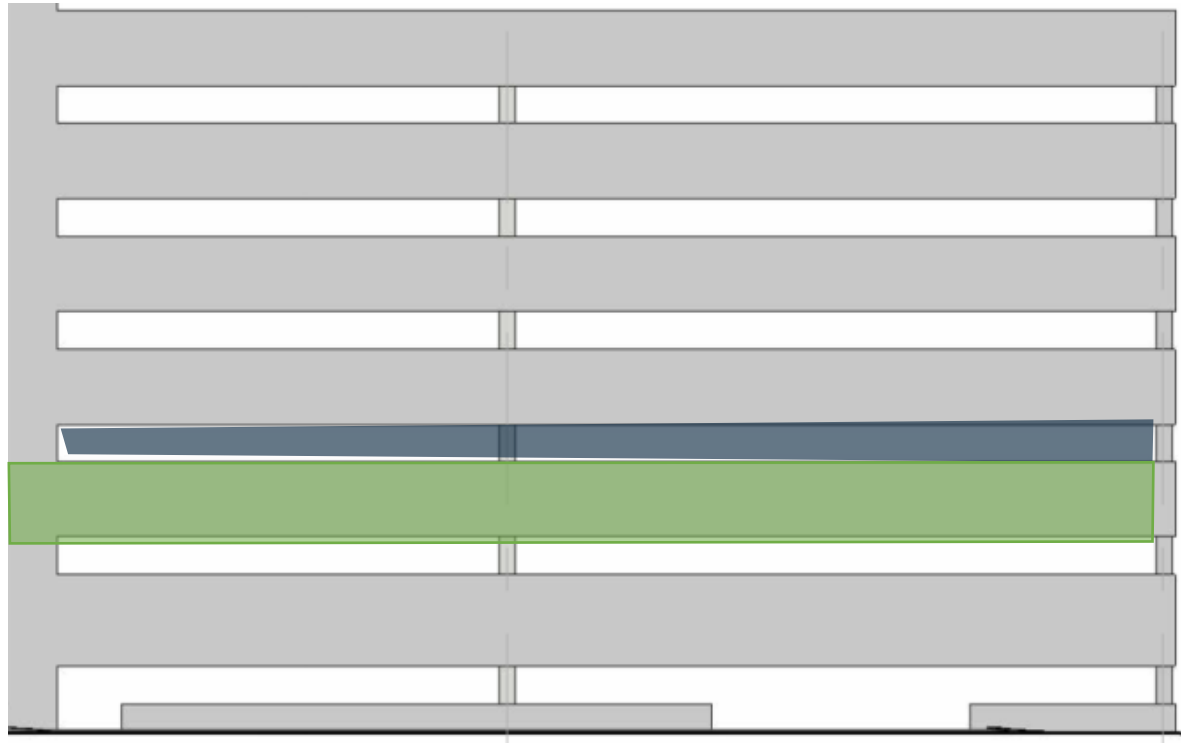
#### Calculation Summary for a Typical Tier

Average Levels = 3.24 Fc  
Average Maximum = 5.73 Fc  
Average Minimum = 1.55 Fc  
Average Min/Max = 4.28 Fc (57% Reduction)

### 1/27 Lighting Approach

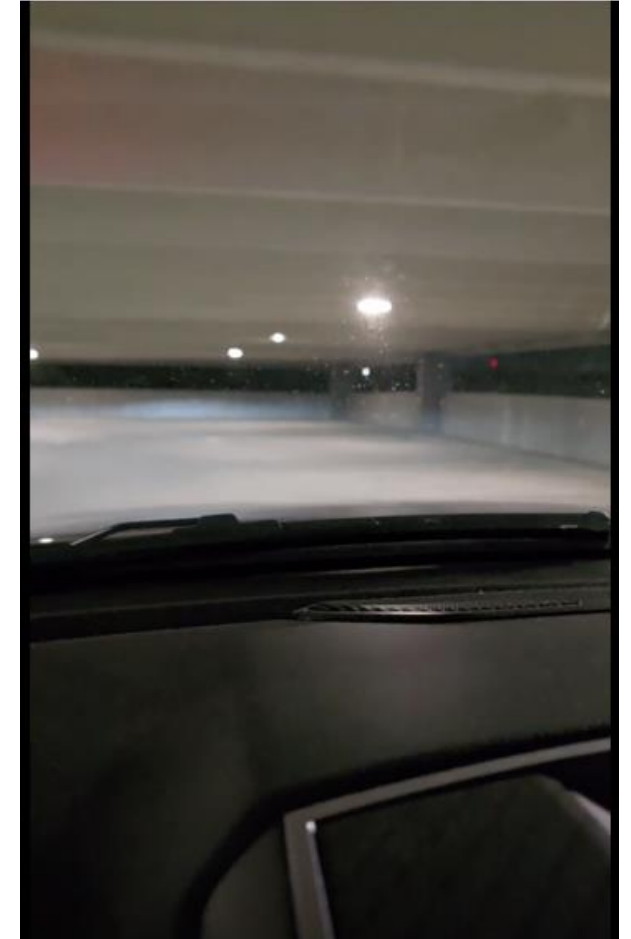
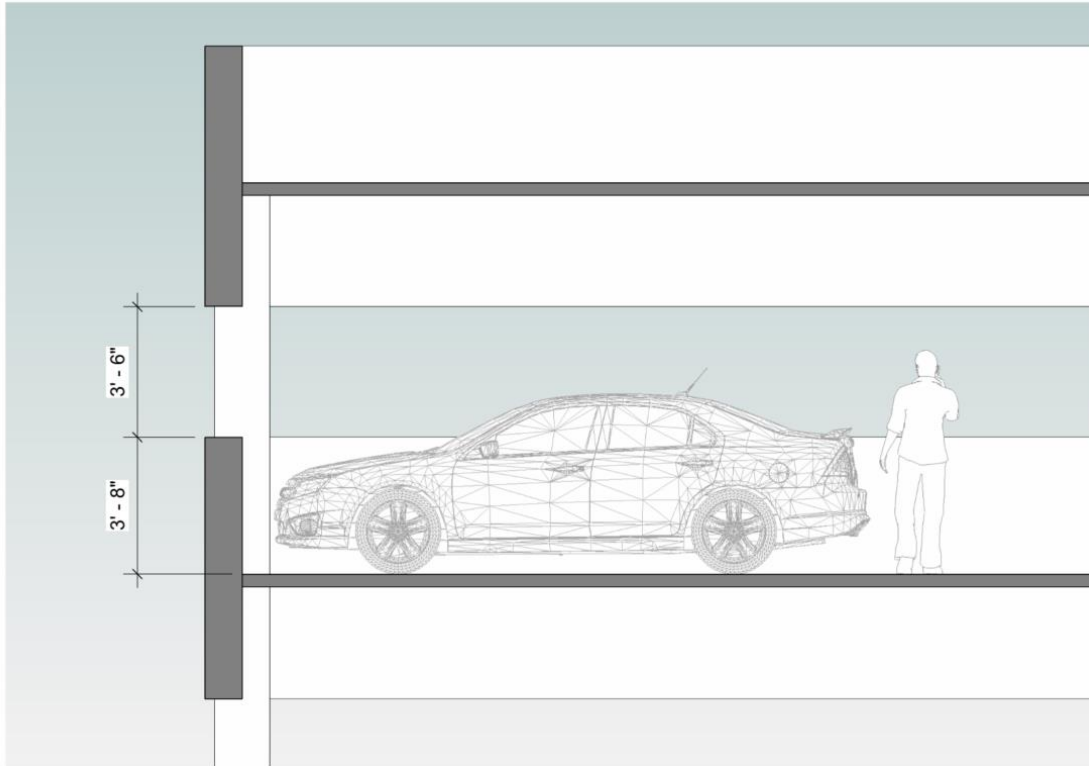


## Garage Lighting & Design





## Garage Lighting & Design

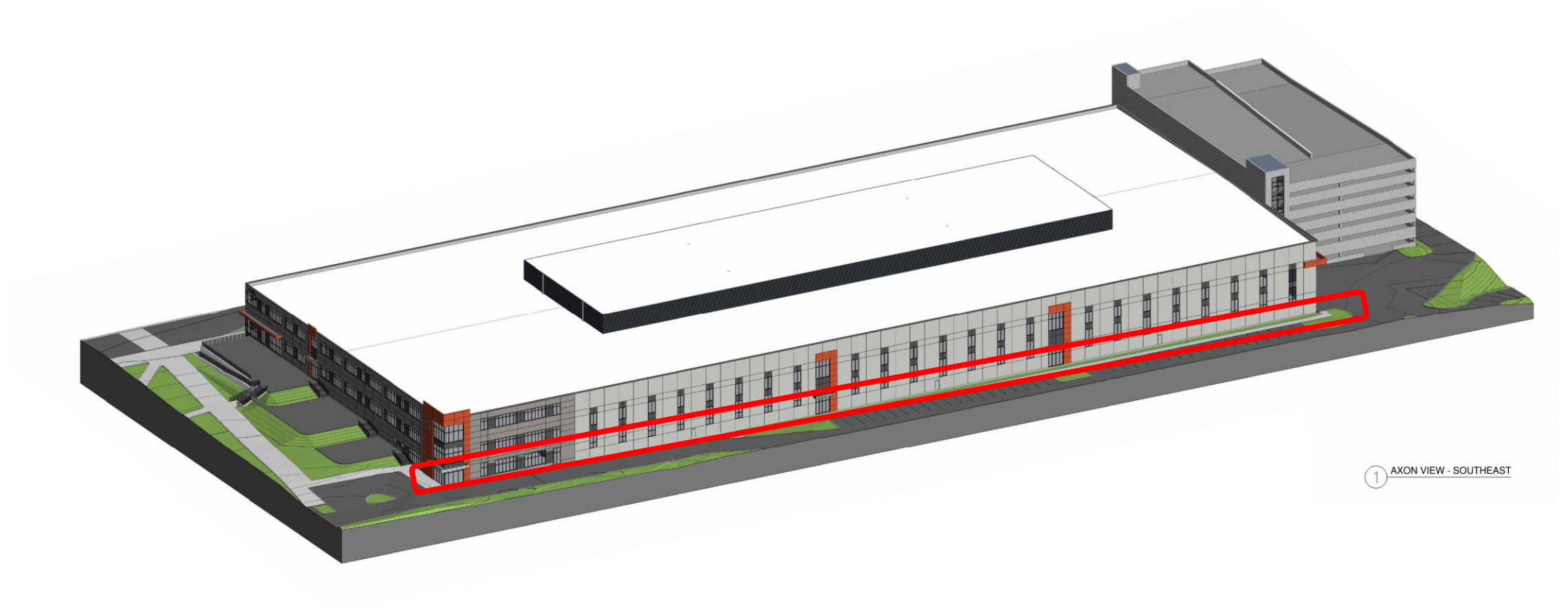




## **Building Lighting & Design and Operations**

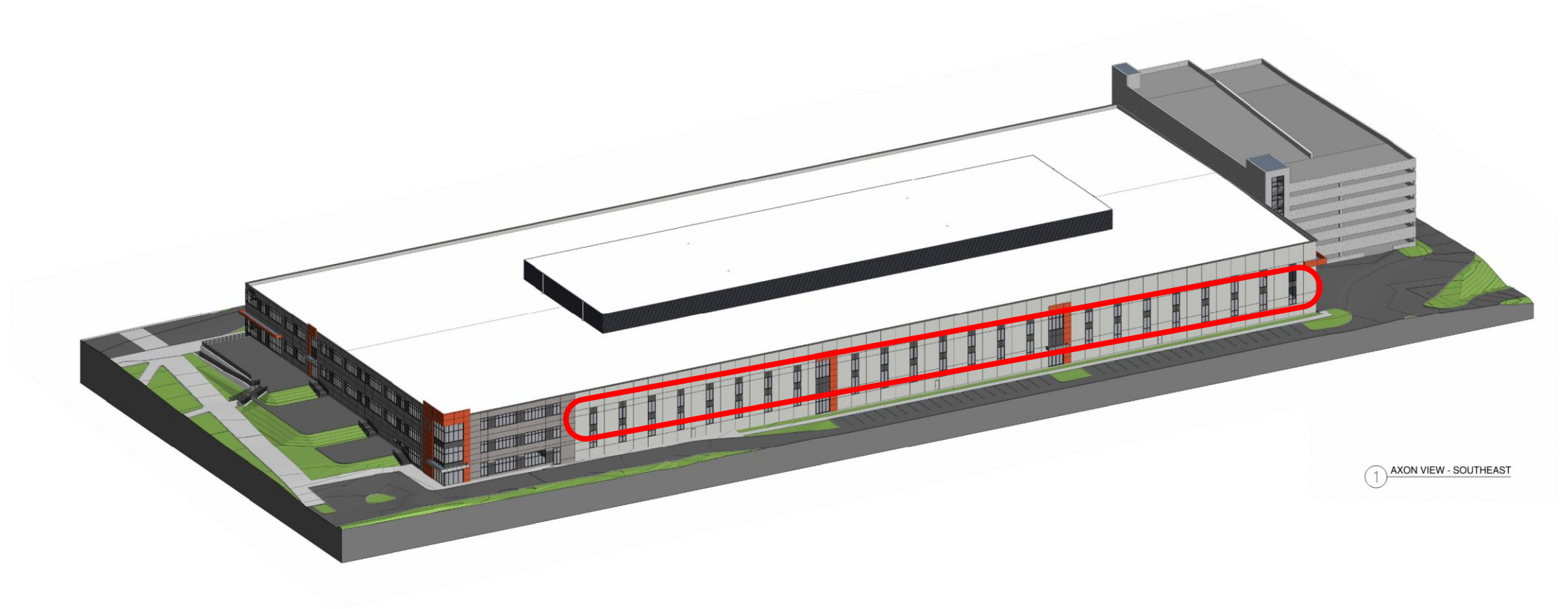
- Select exterior building materials
- Specify light fixtures that reduce glare and light spillage “shielding”
- Exterior lighting a pedestrian level
- Utilize occupancy sensors of for exterior lighting
- Window film selection
- Increase vegetative screening

## Building Lighting & Design and Operations



1 AXON VIEW - SOUTHEAST

## Building Lighting & Design and Operations



1 AXON VIEW - SOUTHEAST



## Building Lighting & Design and Operations

### Specification Sheet



#### SOLYX® Glass Finishes

##### SXGF-0097 Deep Etch



#### Manufacturer Detail

SOLYX® SXGF-0097 Deep Etch film is recommended for application to interior and exterior glass. This film is a 3 mil (75 micron) decorative polymeric flexible vinyl film coated with a solvent based permanent acrylic pressure-sensitive adhesive with a 1 mil polyester liner.

#### Durability

OUTDOOR: 7 years based on vertical exposure and depending on magnitude of UV exposure  
INDOOR: 15 years

#### Fire Rating

When applied to glass or plastic surfaces:  
Horizontal Burn (Flame Spread) ASTM D-635 inch Less than 1.0  
UL 94 Rating UL Classification V-0  
Class A 0 -25 Flame Spread Index 0 -450

#### Installation and Warranty

##### Installation

Installation should be in accordance with manufacturer's installation instructions.

##### Warranty

This SOLYX® product will be free from defects in material and manufacture for a period of ten (10) years from the date of installation. Manufacturer shall warrant and agree to replace any defective glazing from, including failure to maintain its specified properties without cracking, peeling, loosening, fading, or discoloring for the following period after Substantial Completion.

#### Product Distribution and Contact Information

##### Distribution

SOLYX® Decorative Films are available through qualified Installing Dealers, Distributors or from Decorative Films, LLC.

Samples submitted upon request.

##### Contact Information

Decorative Films, LLC  
1-888-657-5224  
[www.decorativefilm.com](http://www.decorativefilm.com)

#### Product Description

SOLYX® SXGF-0097 Deep Etch is a clear translucent, high grade decorative polymeric vinyl film designed to give simulated frosted glass or an impression of etched, cut or sandblasted glass and used in decorative design applications including shop windows, glass doors and glass-like surfaces. It is perfect for privacy, decorative or architectural applications.

#### Specifications

Product Code	SXGF-0097
Product Family	Simple Frosted
Film Type	Vinyl
Adhesive Type	Pressure-sensitive
Usage	Interior or Exterior
Available Width(s)	60" (1524mm)
Full Roll Length	100 linear feet (30.5m)
Thickness	3 mil
Shading Coefficient	
Visible Light Reflection	80%
Visible Light Transmission	20%
UV Transmission	25%
Infra-Red Transmission	30%

#### Product Construction

Face Film  
3 mil vinyl

Adhesive

Solvent-based clear acrylic, Pressure-sensitive

Release Liner

1 mil polyester

#### Product Details

SOLYX® and *Decorative* are trademarks of Decorative Films, LLC. © 2015 Decorative Films, LLC. All rights reserved.

RECEIVED  
CHECKED ☐ REVISED AND RESUBMIT  
REJECTED ☐ FURNISH AS CORRECTED

Corrections or comments made on the shop drawings during this review do not relieve contractor from compliance with requirements of the drawings and specifications. This check is only for review of general conformance with the design concept of the project and general compliance with the information given in the contract documents. The contractor is responsible for confirming and completing all quantities and dimensions, selecting fabrication processes and techniques of construction, coordinating his work with that of all trades, and performing his work in a safe and satisfactory manner.

RE: DINNEEN ARCHITECTS & PLANNERS, INC.  
REVIEWED BY: PCS  
Active Date: 04-25-22

### Specification Sheet



#### SOLYX® Glass Finishes

##### SXWF-CM Charcoal Matte



#### Product Details

SOLYX® SXWF-CM Charcoal Matte is a smooth, charcoal-tinted, translucent polyester film. Manufactured with a silicone coated liner which protects the clear, pressure-sensitive adhesive, it is designed for application to interior glass, single- or double-pane, and exterior facing glass. It is ideal for privacy, decorative, or architectural applications.

#### Flammability Rating

This product meets ASTM E84 and is classified as Class A as defined in NFPA 101, Life Safety Code®.

#### LEED Credit EQ 4.1 Low Emitting Materials, Adhesives & Sealants

This product has zero VOC content according to 40 CFR 59, Subpart D (EPA method 24).

#### Installation and Warranty

##### Installation

Installation should be in accordance with the manufacturer's installation instructions. This film is applied using the same tools and techniques used for installing window tinting films.

##### Warranty

This SOLYX® product will be free from defects in material and manufacture for a period of five (5) years from the date of installation. See warranty information for specific details.

#### Product Distribution and Contact Information

##### Distribution

SOLYX® Decorative Films are available through authorized Installing Dealers, Distributors, or dealers from Decorative Films, LLC.

Samples submitted upon request.

##### Contact Information

Decorative Films, LLC  
1-888-657-5224  
[www.decorativefilm.com](http://www.decorativefilm.com)

#### Product Description

SOLYX® SXWF-CM Charcoal Matte is a smooth, charcoal-tinted, translucent polyester film that is ideal for obscuring direct visibility while allowing good light transmission.

#### Specifications

Product Code	SXWF-CM
Product Family	Frosted
Film Type	Polyester
Adhesive Type	Pressure-Sensitive
Usage	Interior
Available Width(s)	60" (1524mm)
Full Roll Length	100 linear feet (30.5m)
Thickness	2 mil
Shading Coefficient	0.78
Visible Light Reflection	9%
Visible Light Transmission	12%
UV Transmission	9%
Solar Heat Reflection	7%
Solar Energy Absorbed	38%
Glare Reduction	35%
U Value	1.14

#### Product Construction

Face Film  
2 mil Polyester

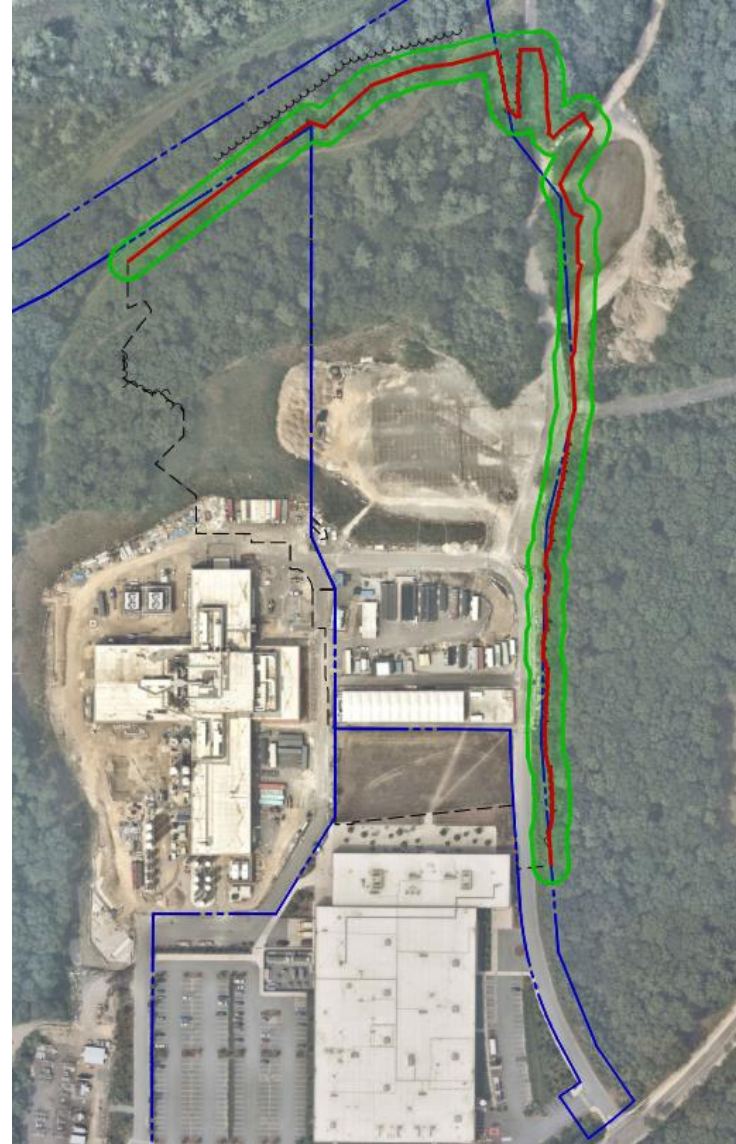
Adhesive

Clear, Pressure-Sensitive

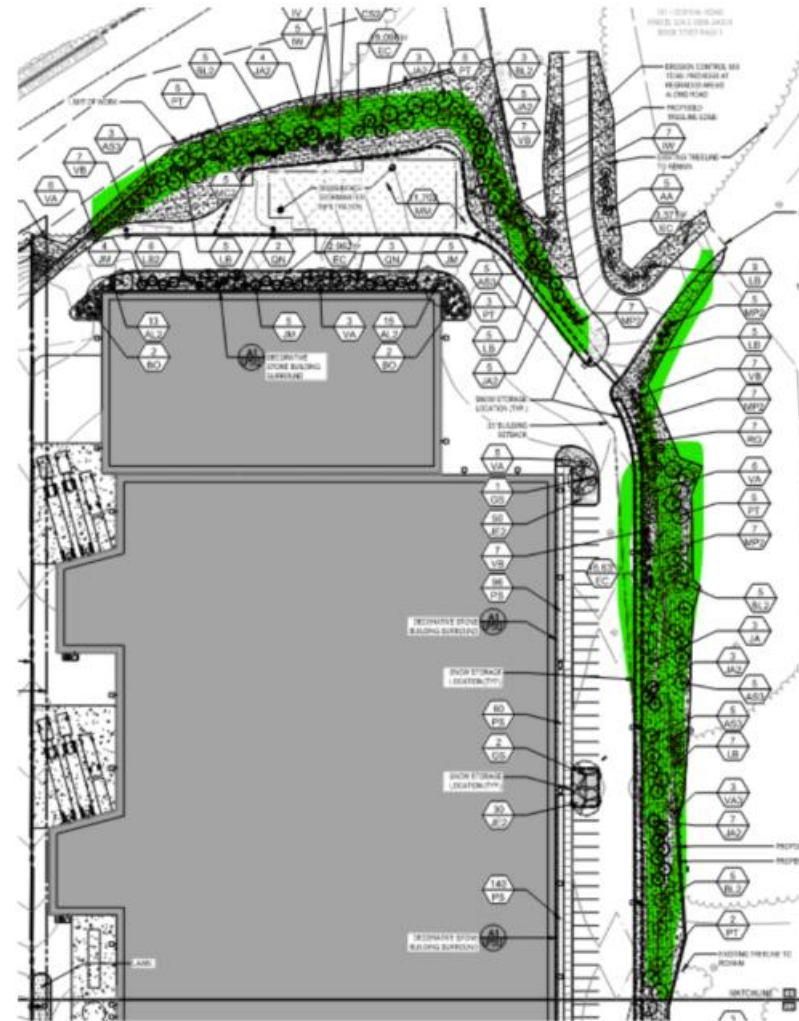
Release Liner

Silicone Coated

## Vegetative Screening



The site plan shows a large rectangular area labeled 'A1 (P512) DECORATIVE STONE BUILDING SURROUND'. This area is flanked by two smaller rectangular areas labeled '2 BO'. Above the main stone surround area is a pink-shaded area labeled 'LAWN'. A callout line points from the pink lawn area to the 'A1 (P512)' label. The plan also shows a road labeled '5 LB' and a road labeled 'HYD'.

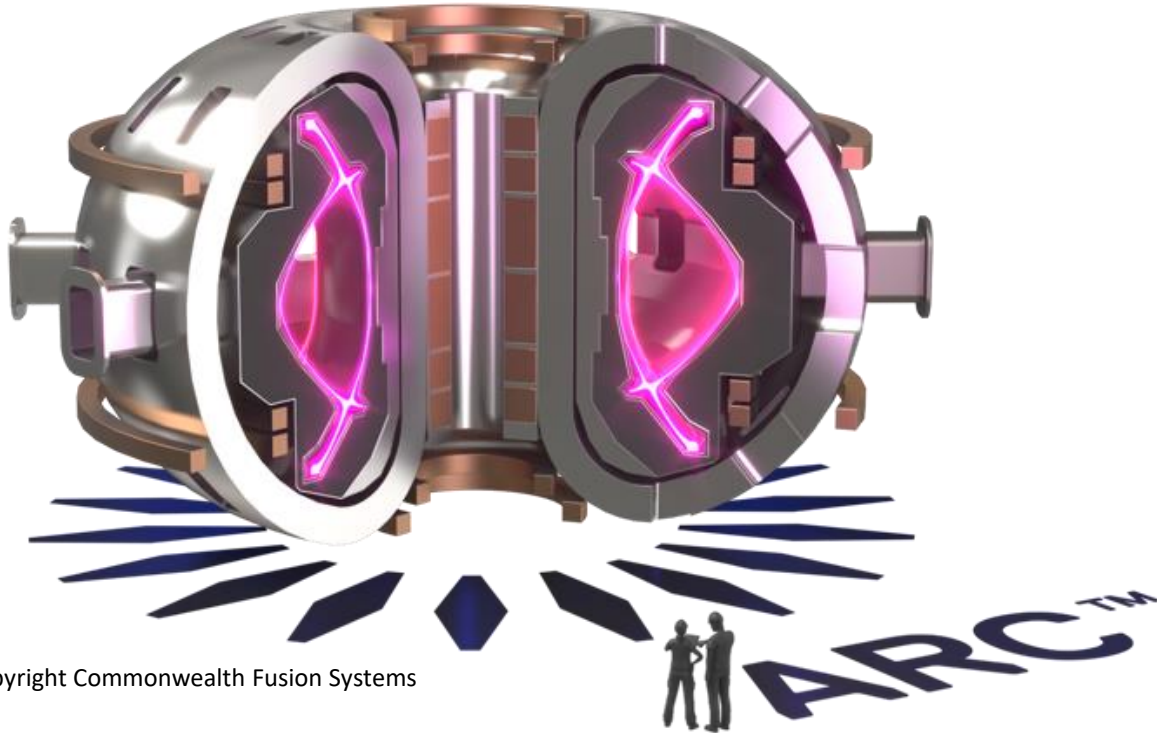




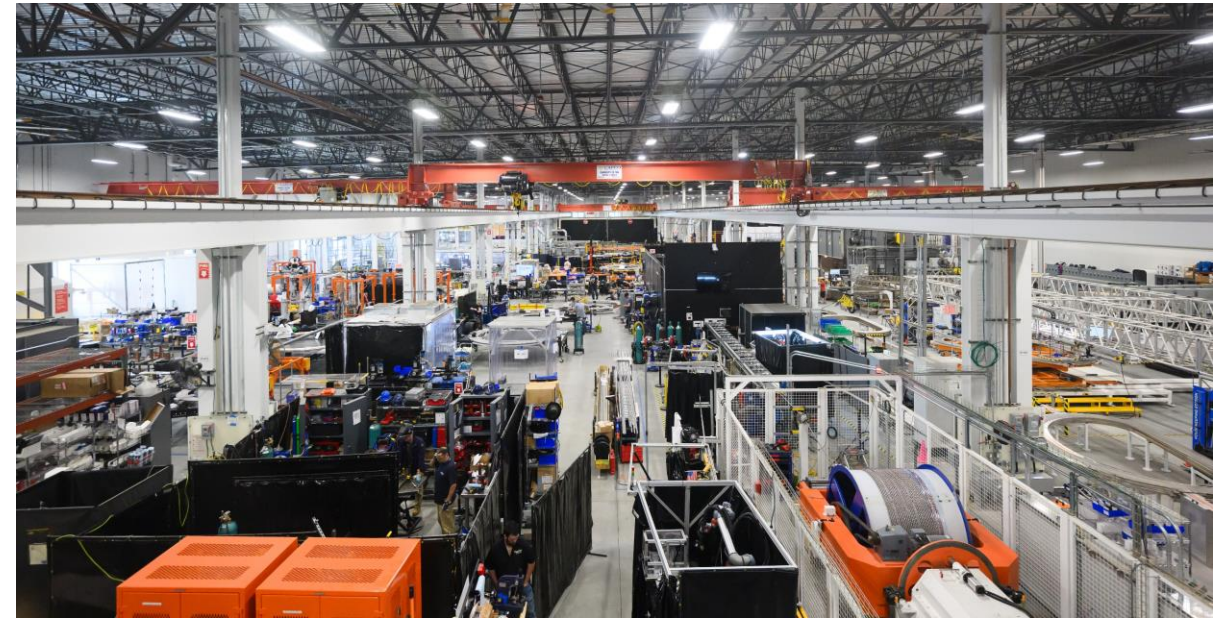
The site plan illustrates the proposed development layout. Key features include:

- CFS-2**: Located at the top left, with a footprint of 285.0 FFE.
- CFS-3**: A large central building with a footprint of 272.0 FFE, containing an **OFFICE** and **MANUFACTURING FPE** area.
- Parking Garage**: Situated to the right of CFS-3, with a footprint of 272.0 FFE.
- Stone Drainage**: Areas labeled 'STONE DRAINAGE' are shown along the top and left edges.
- Sediment Forebay**: A 'SEDIMENT FOREBAY TR' is located at the bottom of the plan.
- Topography**: Contour lines are drawn across the site, with elevations ranging from 260 to 285 feet.
- Access and Easements**: Various lines and labels indicate access points, easements, and utility corridors.

## Commonwealth Fusion Systems – Building 3



Copyright Commonwealth Fusion Systems



Copyright Commonwealth Fusion Systems



